

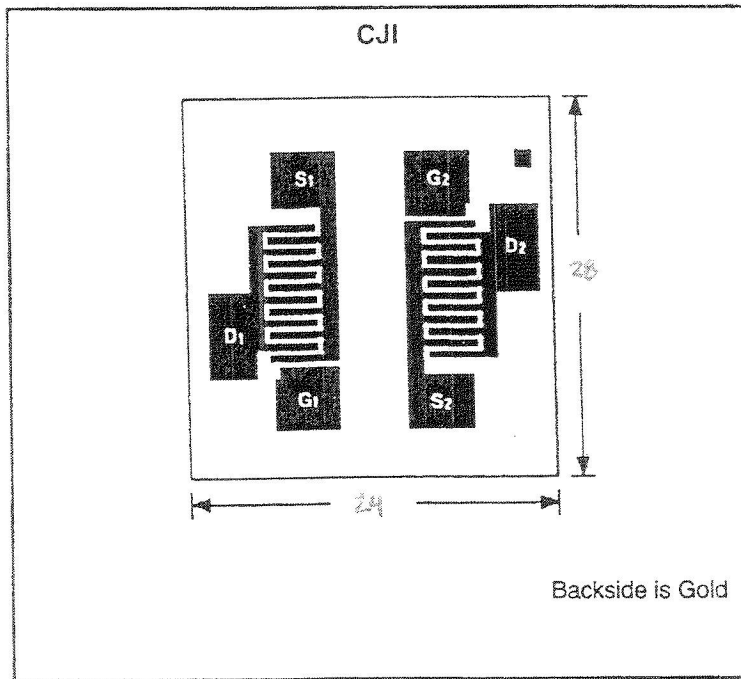


Sierra Components, Inc.

2222 Park Place • Suite 3E • Minden, Nevada 89423

Phone: 775.783.4940 Fax: 775.783.4947

Chip back potential is the level which bulk silicon is maintained by on-chip connection, or it is the level to which the chip back must be connected when specifically stated below. If no potential is given the chip back should be isolated.



Topside Metal: Aluminum

Backside Metal: Gold

Backside Potential:

Bond Pad Size: $.004''$ Min.

Mask Ref: CJ1

MFG: Calogic LLC

THICKNESS: $.012''$

Part # SST441

APPROVED BY: R Bacon

DIE SIZE : $.024'' \times .028''$

DATE: 1/25/10